

Year 9 Expectations Evening



Thursday 15th September 2022

A copy of this presentation will be made available on our website at the end of the week.

Ready. Respectful. Safe



Welcome to Greenford High School



COMMUNITY COMPASSION COURAGE RESPONSIBILITY RESILIENCE



Agenda



1. Success and Learning: Mrs M Pye (Headteacher)
2. Assessment, Reporting, 'Show My Homework' & Options: Mr A Bush (Assistant Headteacher)
3. Focusing on the Fundamentals and Behaviour Expectations: Mr R Dhindsa (Year Leader)
4. Character development at GHS: Mr N Laryea (Assistant Headteacher)
5. Achievement: Mrs A Phull (KS3 Achievement Leader)
6. Show my Homework and Emotional and pastoral support: Mrs L Grimley (Deputy Headteacher)

COMMUNITY COMPASSION COURAGE RESPONSIBILITY RESILIENCE



Success and Learning



Mrs M Pye
Head Teacher

COMMUNITY COMPASSION COURAGE RESPONSIBILITY RESILIENCE



Lots to Celebrate



COMMUNITY COMPASSION COURAGE RESPONSIBILITY RESILIENCE



Lots to Celebrate!



- At GCSE, 37% of the grades were awarded at the very top end, 9-7. This is an incredible achievement.
- Our Progress 8 score shows that students achieved almost one grade higher in all their subjects than expected, on average.
- 67% achieved Grade 5+ in English and Maths compared to the national average of around 40%.



COMMUNITY COMPASSION COURAGE RESPONSIBILITY RESILIENCE



Lots to Celebrate!



- Best ever top A Level results - 25% were a grade A*-A and 50% were a grade A*-B.
- Huge number of students off to excellent universities, including Oxbridge, Russell Group & the USA. Over 1/3 in at least the top 24 universities.
- 35 A Level students achieved all A*s and A grades.
- 59 A Level students (almost 25%) achieved at least 2 A grades.



COMMUNITY COMPASSION COURAGE RESPONSIBILITY RESILIENCE



Key Messages



- A crucial year - your children are starting their GCSEs.
- Your child should expect to be working hard.
- You may notice some changes in attitude / focus - the challenges of adolescence need to be worked through.



COMMUNITY COMPASSION COURAGE RESPONSIBILITY RESILIENCE



Continuing to Bounce Back

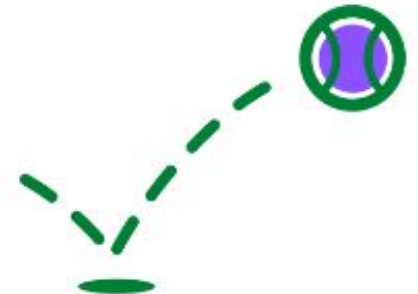


Strong academic support and outstanding pastoral care:



- Hugely increased pastoral team with lots of support available
- Opportunities for counselling, mental health support
- Opportunities for clubs and enrichment - please encourage your child to get involved!
- Excellent teaching and learning
- A focus on independent learning and use of technology for learning.

COMMUNITY COMPASSION COURAGE RESPONSIBILITY RESILIENCE

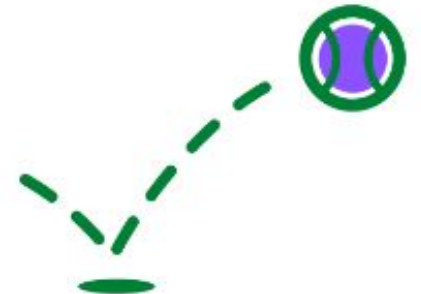


What do we need from you?



- Support us.
- Raise concerns early.
- Send your child in every day.
- Limit unproductive screen time. Focus on using technology for learning instead.
- Get logged onto Show My Homework and encourage your child with independent study.
- Make sure they have somewhere quiet to study at home.

COMMUNITY COMPASSION COURAGE RESPONSIBILITY RESILIENCE



Assessment, Reporting, 'Show My Homework' & Options



Mr Bush
Assistant Head Teacher
abush@greenford.ealing.sch.uk

COMMUNITY COMPASSION COURAGE RESPONSIBILITY RESILIENCE



Assessment Systems



Experienced teachers:

- Determining GCSE grades
- Designing assessments
- Marking, checking and moderating exams

Information you can trust!

COMMUNITY COMPASSION COURAGE RESPONSIBILITY RESILIENCE



What can you do?



Parents can support by:

- Discussing every report
- Offering constructive input

Helping your child to succeed!

COMMUNITY COMPASSION COURAGE RESPONSIBILITY RESILIENCE



GCSE Grading System



- Used in Y9 / Y10 / Y11
- Helps track progress
- Highlights students at risk
- Ensures early intervention

COMMUNITY COMPASSION COURAGE RESPONSIBILITY RESILIENCE



GCSE Grades



- 9-1 scale
- Grades 9/8/7 are the best
- Grade 4 is a 'standard pass'
- Grade 5 is a 'good pass'
- English, Maths and Science are core subjects

COMMUNITY COMPASSION COURAGE RESPONSIBILITY RESILIENCE



Tracking Progress



Attainment grades

Interim 1

Interim 2

Interim 3

History

3+

3

3-

Maths

3

3+

4

English

3

3

3

Students should make progress from one report to another

COMMUNITY COMPASSION COURAGE RESPONSIBILITY RESILIENCE



Target Grades



Compare attainment grades with target grades:

	End of KS3 Target	Attainment
English	3+	4-
Maths	4-	4-
Science	4-	3

Students should meet or exceed targets by the end of Y9

COMMUNITY COMPASSION COURAGE RESPONSIBILITY RESILIENCE



Attitude to Learning



1: Excellent

2: Good

3: Satisfactory

4: Unsatisfactory

5: Very poor

Ask your child:

- What are you finding difficult?
- How are you going to improve your effort?

COMMUNITY COMPASSION COURAGE RESPONSIBILITY RESILIENCE



Behaviour /Homework



- 'B' indicates a Behaviour concern
- 'H' indicates a Homework concern

Attitude to learning and independent private study are key to raising achievement.

COMMUNITY COMPASSION COURAGE RESPONSIBILITY RESILIENCE



In Summary



Year 9 Reports:

- Attainment grades should be getting close to the end of KS3 target grades
- Attainment grades should improve in each interim
- Attitude to Learning should be 'excellent' or 'good'
- There should be no 'B' or 'H' concerns

COMMUNITY COMPASSION COURAGE RESPONSIBILITY RESILIENCE



Show My Homework



Highly recommended home learning mobile phone app:

- For parents - actively involved every day
- Daily app updates and notifications
- What homework has been set and when it is due
- Parents fully informed

COMMUNITY COMPASSION COURAGE RESPONSIBILITY RESILIENCE



Show My Homework



- Most students using it
- Improves organisation
- Please sign up and check it every day!
- Meaningful conversations

You will be emailed username and log in details next week

COMMUNITY COMPASSION COURAGE RESPONSIBILITY RESILIENCE



Key Stage 4 Options



- THREE options from...
- **History, Geography, Computer Science, Media Studies, Business Studies, Economics, Psychology, IT, Art, Photography, Drama, Design Technology, PE, RE, Childcare, Cooking, Work Skills...**
- Start thinking about future education and career

COMMUNITY COMPASSION COURAGE RESPONSIBILITY RESILIENCE



Focusing on the Fundamentals



Mr Dhindsa (Head of Year)
rdhindsa@greenford.ealing.sch.uk

Ms Allen and Mr Bhullar (Deputy Head[s] of Year)
aallen@greenford.ealing.sch.uk and
hbhullar@greenford.ealing.sch.uk

Ms Latawiec (Pastoral Support Worker)
blatawiec@greenford.ealing.sch.uk

COMMUNITY COMPASSION COURAGE RESPONSIBILITY RESILIENCE



Contact Details

Please ensure we have up-to-date contact details:

- Postal address
- Home phone
- Mobile phone
- Email

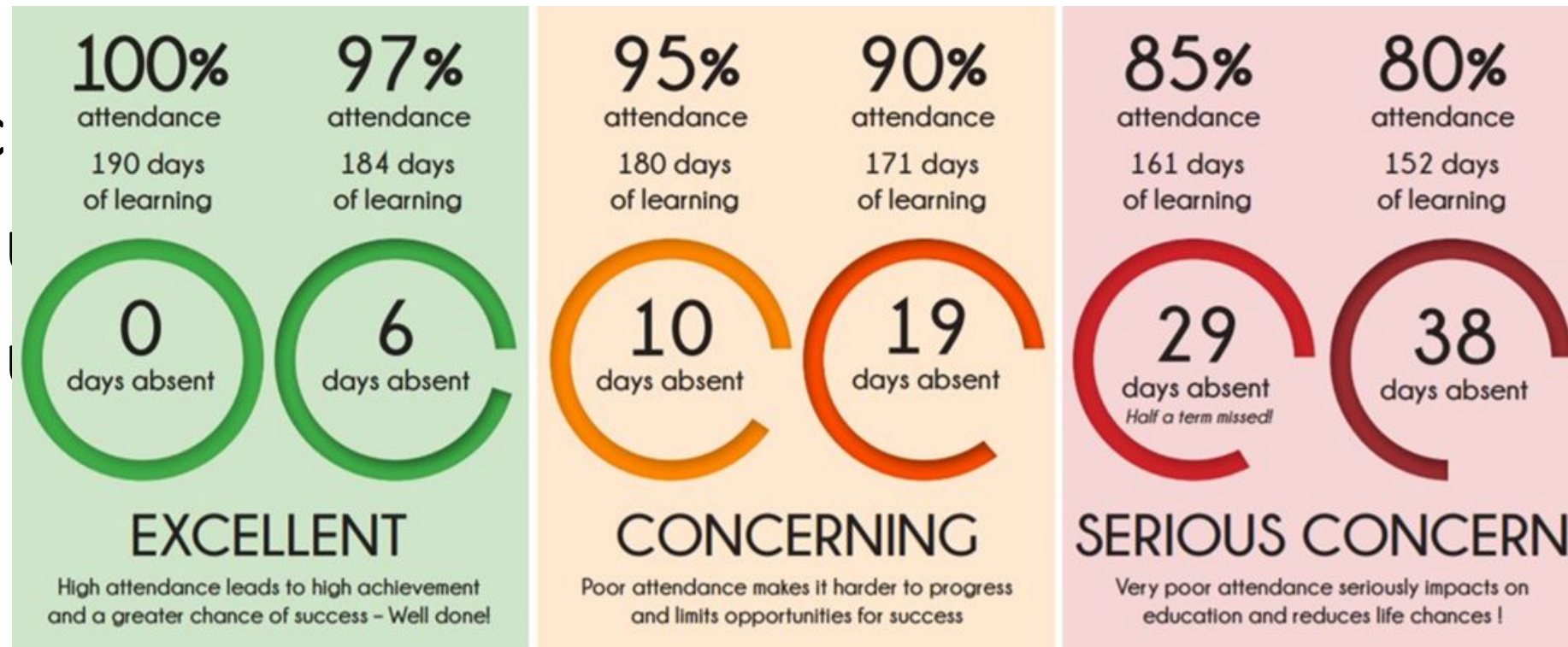


Attendance and Punctuality



Year 9: always ready; amazing manners.

- Sc
- M
- M



COMMUNITY COMPASSION COURAGE RESPONSIBILITY RESILIENCE



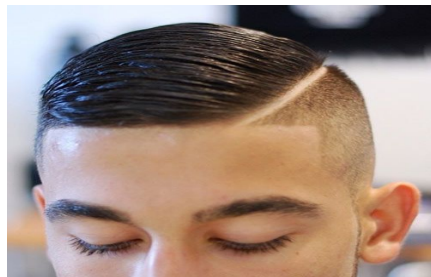
Correct Uniform



COMMUNITY COMPASSION COURAGE RESPONSIBILITY RESILIENCE



Incorrect Uniform



- Uniform
- Page 37
 - Page 38
 - Page 39



COMMUNITY COMPASSION COURAGE RESPONSIBILITY RESILIENCE

Behaviour



- We expect the highest standards of behaviour at Greenford High School;
- We expect to see those high standards in the classroom, around the school site, and in our community;
- GHS Rules: **Ready – Respectful – Safe;**
- In the classroom, we follow a **Behaviour For Learning Pathway;**
- If your child has **B** on their Interim it will indicate that their behaviour in that lesson is a concern.

COMMUNITY COMPASSION COURAGE RESPONSIBILITY RESILIENCE



Behaviour for Learning Pathway



Caution

- Verbal Warning is given.
- First time misbehaviour recorded.
- Teacher records name of student.

Yellow card

- Final warning given.
- Second time misbehaviour is recorded.
- Teacher records name of student
- 15 minute detention followed by a corrective conversation with teacher.

Red card

- Final time misbehaviour is recorded.
- Student will be sent to another class within department.
- 30 minute department detention on a night selected by the department followed by a corrective conversation with teacher.
- Behaviour incident recorded on student's file.

COMMUNITY COMPASSION COURAGE RESPONSIBILITY RESILIENCE



How can you support our behaviour policy?



- Reinforce our expectations with your son/daughter at home.
- Support the school and the behaviour policy when staff call home.
- Keep us informed of any information that may impact on your son/daughter's behaviour in school so we can support.

COMMUNITY COMPASSION COURAGE RESPONSIBILITY RESILIENCE





Character Development

Mr Laryea
Assistant Headteacher
nlaryea@greenford.ealing.sch.uk

COMMUNITY COMPASSION COURAGE RESPONSIBILITY RESILIENCE



GHS Character Strengths



COMPASSION



COURAGE



COMMUNITY



RESILIENCE



RESPONSIBILITY

COMMUNITY COMPASSION COURAGE RESPONSIBILITY RESILIENCE



Why is Character important?



Character defines the qualities that people see in each other, making up their personality.

- **How you talk**
- **Your behaviour**

WHY is Character important?

- Students, regardless of who's looking, will **make the right choice for the community.**
- Students are **prepared for life**, not just for exams or the employment market.

COMMUNITY COMPASSION COURAGE RESPONSIBILITY RESILIENCE



Character at GHS



At school, we will be focusing on/rewarding character

- **Rewarding with Character Points** (to replace Achievement Points)
- **In weekly assemblies** with a termly Character Strength focus
Autumn 1: Community
- During **Form time/PSCHE/lessons** activities and discussions.
- Character Passport/Badge

COMMUNITY COMPASSION COURAGE RESPONSIBILITY RESILIENCE





Achievement

Mrs Phull

KS3 Achievement Leader

aphull@greenford.ealing.sch.uk

COMMUNITY COMPASSION COURAGE RESPONSIBILITY RESILIENCE



KS3 Vision



Able to think!!!

Independent



Engaged in learning



**GOOD
MANNERS
and
KINDNESS
ARE ALWAYS
IN FASHION**

Be well mannered
and show
gratitude

Excited



Competent with
ICT

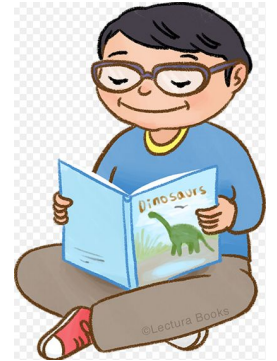


COMMUNITY COMPASSION COURAGE RESPONSIBILITY RESILIENCE

Evening Routines

A Suggested Routine:

- 3:30pm** Arrive home, change out of uniform, have a snack
- 3:45pm** Check ShowMyHomework and planner and complete the tasks set that day
- 5:30pm** Playstation/ Electronic- downtime (whatever your child enjoys)
- 6:15pm** Homework/ Revision
- 6:50pm** Check my school bag, remove all the books for the day and re-pack for the books for the next day
- 7:00pm** Dinner
- 9:00pm** Read
- 9:30pm** Sleep



Packing Your Child's Bag



Timetable	Monday	Tuesday	Wednesday	Thursday	Friday
Before School Sessions 8:00am	Music R224				
Period 1 8:35-9:25	MUSIC FG18	Maths CG01	R.E DS05	PE GG03	Science CG05
Period 2 9:25-10:15	MUSIC FG18	Maths GG01	R.E DS05	PE GG03	Computer Studies BG07
Break 10:15-10:35					
Period 3 10:35-11:25	Spanish DG20	science CS01	Spanish DG20	Maths CG01	History DS18
Period 4 11:25-12:15	Maths DG01	Science CS01	Spanish DG20	Maths CG01	Geography DS20
Lunch 12:15-13:00					
Form 13:00-13:20	DS02	DS02	DG02	Assembly Main Hall	DS02
Period 5 13:20-14:10	Geography DS20	English DF03	DT EG06	English DF03	Life Skills DS04
Period 6 14:10-15:00	History DS18	English DF03	DT EG06	English DF03	English DF21
After School Sessions 15:00 -17:00					

Support your child by ensuring they are doing this the night before not in the morning.
Check which week we are in and the lessons that are taking place

COMMUNITY COMPASSION COURAGE RESPONSIBILITY RESILIENCE



The Road to Success- Clubs/ Activities



Encourage your child to take part in the wider school:

- Take up a new instrument
- Join the choir
- Attend a fitness club- before school, lunch and after school
- Chess Club, debating club, spelling bee and many more.....



	Monday	Tuesday	Wednesday	Thursday	Friday
AM		Rugby Breakfast Club 7:30am Invite only	Boxing Fitness Invite only MOR/Mr Odedra		Early Bird Fitness 7:30 RAY
		Early Bird Fitness 7:30 RAY			
Lunch/ Break		Spelling Bee LIT Lunch IF20		Living Library WIL 10:45-11am IF15	Origami Club WIC Lunch CG05
After School	Y9 & 10 Cricket SPH SAG/EBZ	Ultimate Frisbee Mr Kiddi	Junior Rugby Mr Blake	Girls Cricket Muga JUS/Ms HB	Girls Football Mr Channer Muga
	Y7 & 8 Rounders Field KEL/HOR	Eagle Boys Reading Club 3-4pm DEO IF15	KS3 Table Tennis Mr Joseph	Y9&10 Boys Fitness Mr Laryea	
	Art Club PAW EDM HAR 3-4pm EF09	DT STEM Club HIR 3:15-4:15 EG05	KS3 Softball Invite only Mr Mantey	Senior Basketball SPH Mr Harvey	
	Acepella Vocal Group BRI 3-3:45 FG17		Year 9 & 10 Rounders RAY	Year 7 & 8 Cricket Field MOR/SAG	
	Science Club RUG/NAV 3:15-4pm IG01		All years Athletics Miss HB	Chess Club ALM & HRZ 3-4:30 CG14	
			GHS Choir POP/OAG 3-4pm FG18	KS3 Band BRI 3-3:45 FG18	
			Percussion Group OAG 3-3:30 FG15		

COMMUNITY COMPASSION COURAGE



How we will support your child?



A study in 2012 claimed that a student's awareness of how to study had a strong correlation with their achievement. *Griffin*

Every student has access to a variety

of support for their subjects:

- Teacher expertise in lessons
- Teacher Marking and feedback
- Google Classrooms
- Educake for Science
- MathsWatch
- Study Skills

Some students have further support if needed:

- Targeted Subject intervention after school
- Homework Club- a quiet place where children can come to work and get help should they need it
- P16 tutors
- Mentoring

COMMUNITY COMPASSION COURAGE RESPONSIBILITY RESILIENCE





Emotional & Pastoral Support

Mrs Grimley

Deputy Headteacher

lgrimley@greenford.ealing.sch.uk

COMMUNITY COMPASSION COURAGE RESPONSIBILITY RESILIENCE



Bullying - what do we do about it?



Bullying is not tolerated at Greenford High School and is tackled in a number of ways - this is what we do:

- We listen and we give support;
- We make it very clear in all our messaging to our community that bullying is not tolerated, for example in PSHCE and assemblies;
- Diversity in all its forms is celebrated;
- Sanctions are issued for those who bully;
- Support is given to those who are victims through mentoring, counselling and other professionals;
- We have designated safe spaces around the school, such as The Inspire Centre in B Block;
- Perpetrators need to take part in mentoring sessions and workshops to help change behaviours;
- If behaviours don't change, the sanctions become more serious;
- We have a team of senior staff dedicated to working to stamp out bullying.

Please see the school's **Anti-Bullying Policy** for more information, including clear flow-charts for how we deal both victims and perpetrators.

COMMUNITY COMPASSION COURAGE RESPONSIBILITY RESILIENCE



Helping you support your child



- Increased pastoral support
- Increased Learning Support Department
- Counselling services increased
- Mental Health Trailblazers and Clinical Psychologist
- Academic Mentor for key exam years
- Peer mentoring schemes in place
- Allocated school social worker
- Anti-Bullying Team
- Attendance/Welfare/Child Protection Teams
- More regular information to parents about how you can support - such as online safety.

COMMUNITY COMPASSION COURAGE RESPONSIBILITY RESILIENCE



Helping you support your child



Teachers and tutors

Year Teams



Phonelines/websites

[anti-bullying
alliance]

YOUNGmINDS
fighting for young people's mental health



Safer Schools Officer

Do you
need
someone
to talk to?

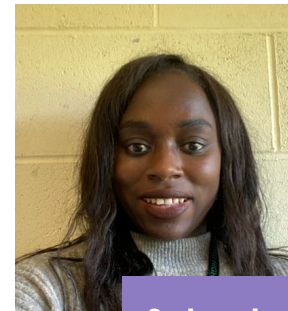


School counsellors

Child Protection Team



Family and friends



School social worker



COMMUNITY COMPASSION COURAGE RESPONSIBILITY RESILIENCE

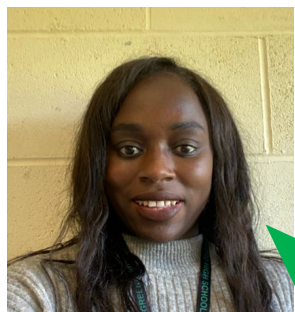
The Child Protection Team



Ms Adhami - Deputy
DSL/Mental Health
Lead

Ms Sierkowska
- CP Admin

Mrs Grimley - DSL



Ms Burgess - School
Social Worker

Ms Thomas - LAC
Co-ordinator

**LADO -
Maggie
Scarlett**

COMMUNITY COMPASSION COURAGE RESPONSIBILITY RESILIENCE

