

Extracurricular: P.E



COMMUNITY COMPASSION COURAGE RESPONSIBILITY RESILIENCE





PE Extra-Curricular Timetable

Mon 30th Oct - Wed 20th Dec 2023



		Monday	Tuesday		Wednesday	Thursday	Friday
AM			AM FITNESS RAY 7:30- 8:10am				KS4 Fitness 7:15 - 7:50 RAY/MOR
LUNC	GY M		Table Tennis ADE				
	SP H	Y10 Football MOR Field					Girls Badminton MAJ
PM		KS3 Boys Basketball SPH Mr Mantey	KS3 Dance SPH TBC		Year 7 Netball HUG (Year 7 MUGA)	Y8& 9 Netball MUGAs RAY	GCSE Practical Workshop STO
		KS5 Basketball SPH @ 4:15			KS5 Basketball Mr Mantey SPH		
		KS3 Girls Football ADE			Year 7 Football DYA Field	6th form Football SAG Field	Staff Football 4pm
		KS4 Fitness suite STO			SPH Athletics SPH MOR	Senior Basketball SPH HAV	
		Y10&11 Netball HEN				Y9 Football MOR Field	

COMMUNITY COMPASSION COURAGE RESPONSIBILITY RESILIENCE



Extracurricular: Music



COMMUNITY COMPASSION COURAGE RESPONSIBILITY RESILIENCE



Music Extra-curricular Clubs

These clubs are open to all students.

Music clubs require a termly commitment.

All clubs start the week beginning Monday 18th September.

You can speak to or email the teacher to find out more information.



Monday	Tuesday	Wednesday	Thursday
Guitar group 15:00 - 15:40 FG17 Simone Mazzola (6th form)/ Mr Oag	Keyboard Group 12:50 - 13:10 FG18 Mr Oag Acapella Vocal Group 15:00 - 15:30 FG17 Miss Bristow	GHS Choir 15:00 - 16:00 FG18 Miss Popovic/ Mr Oag Percussion group 15:00 - 15:30 FG15 Mr Gutteridge/ Mr Oag/	Miss B's Band 15:00 - 15:45 Miss Bristow FG18



New Percussion Groups

These clubs are open to all students.
Music clubs require a termly commitment.
The clubs start the week beginning Monday 30th October.
You can speak to or email Mr Oag to find out more information.



Tuesday	Wednesday
Dhol drumming group 15:00 - 15:40 Kabir Saib (6th Form student)	Samba percussion group 15:00 - 15:30 FG07 Mr Gutteridge (Drum tutor)



These are brand new groups.
You could be a founding member of something **amazing!**



Vocal Group - Tuesday 3-3.30pm FG18

Do you enjoy singing?
Do you enjoy music?
Do you enjoy being part of a team?
Do you want to improve your resilience?

Comments from members;
'Chilled environment'
'Improve multitasking skills'
'Friendly atmosphere'
'Less pressure when performing'

I ♥
SINGING



Clapping Song - Winter Concert 20



Cup Song - Summer Concert 21



Come and join Vocal Group, everyone is welcome

ECC Timetable

Does not include P.E and Music



Whole School Extracurricular Timetable - not including P.E and Music

	Monday	Tuesday	Wednesday	Thursday	Friday
AM					
LUNCH				Geography Documentary Club DS21 - DOY	
PM 3PM onwards	KS3 Study Space CG13 - PHU Chess Club BG01 - HRZ/ALM/RAV Drama Club (Y7/Y8) EF03 - NIM KS3 DT Stem Club EG15 - ROS/ALU	KS3 Study Space CG13 - PHU	KS3 Study Space CG13 - PHU Y10 - Y13 Debate Club DF10 - WLM/Y12	KS3 Study Space CG13 - PHU Musical Theatre EF03 - NIM/GIS Post-16 Oxbridge Club BF01 - WES Post-16 Medicine/Dentists/Vets Club Common Room - HAI	

COMMUNITY COMPASSION COURAGE RESPONSIBILITY RESILIENCE



Advertising Posters



COMMUNITY COMPASSION COURAGE RESPONSIBILITY RESILIENCE



Your favourite club returns to Greenford High School...



GHS Chess Club

STUDENTS FROM EVERY YEAR GROUP WELCOME

PLAYERS OF ANY ABILITY WELCOME

MONDAY 15:00-16:00
GHS SCHOOL LIBRARY

Ask Mr Al-Musawi, Mr Hirtzel, or Mr Raveendran for more details!



COMMUNITY COMPASSION COURAGE RESPONSIBILITY RESILIENCE





PROBLEM SOLVING CLUB

- Come to **CG04** in the Maths department after school on **Thursdays at 3pm** to have some **fun** solving problems (yes, really). Students of all ages and sets are welcome.
- Can serve as preparation for the **UK** Maths challenge and other Maths competitions.
- Should help improve your Maths results.



Students helping students



KS3 Study Space opens Monday 2nd October
Monday- Thursday CG13
(3:10pm-4:10pm)



A place to come if you
need access to a device

COMMUNITY COMPASSION COURAGE RESPONSIBILITY RESILIENCE



EVERY MONDAY IN EF03



GC Code:
ulmm6qy

Year 7 and 8 Drama Club

3:00 - 4:15

Join us for games, fun and of course
... LOTS of acting!

MUSICAL THEATRE CLUB

WELCOME TO ALL
ABILITIES

ALL
YEARS!

Thursdays
15:00-16:15
EF03

GOOGLE
CLASSROOM
REGISTER HERE:
outxnzm



COMMUNITY COMPASSION COURAGE RESPONSIBILITY RESILIENCE



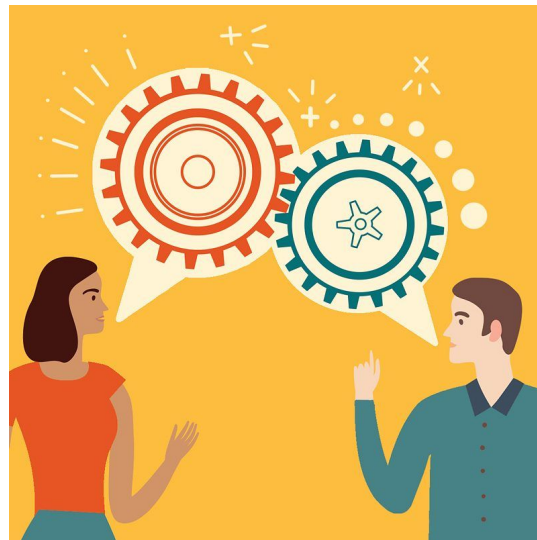
Debate Club



Wednesday 3pm - 4pm

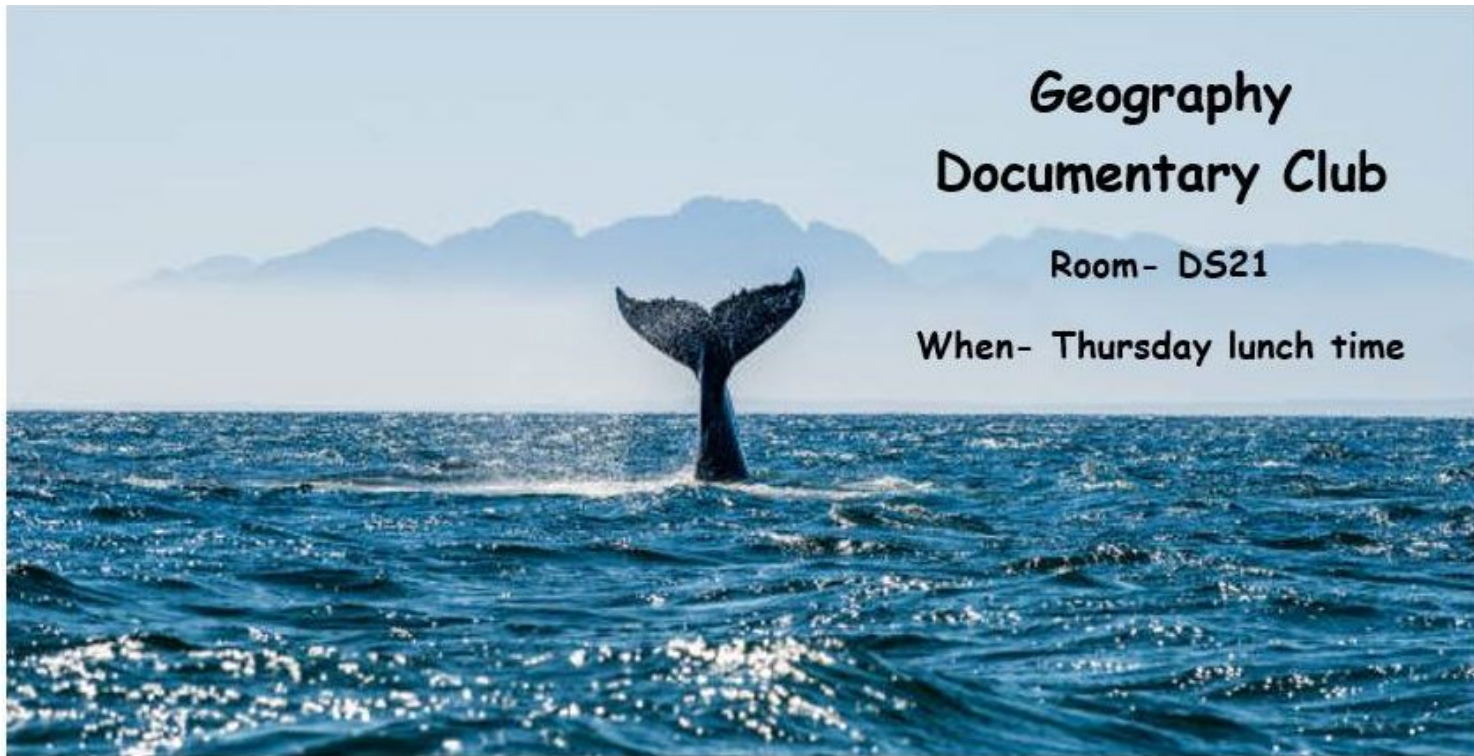
DF10

18mariamsediqh@greenford.ealing.sch.uk



COMMUNITY COMPASSION COURAGE RESPONSIBILITY RESILIENCE

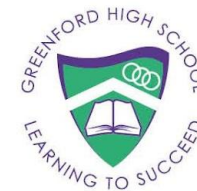




Geography Documentary Club

Room- DS21

When- Thursday lunch time



COMMUNITY COMPASSION COURAGE RESPONSIBILITY RESILIENCE

