



**GREENFORD
HIGH SCHOOL**



LEARNING TO SUCCEED



A WELCOME FROM THE HEADTEACHER

It is with great pleasure that I welcome you to Greenford High School. As Headteacher, I am immensely proud of the many things that combine to make Greenford High such a special place. If you choose to send your son or daughter to Greenford High, you can be certain that he or she will be provided with every opportunity to flourish and achieve his or her very best.

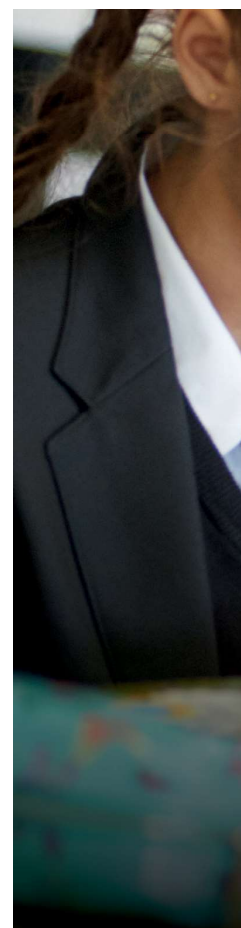
Our academic results are outstanding, and regularly place us in at least the top 5% of schools nationally. Our expert, carefully chosen teachers, our broad, exciting curriculum and our focused approach to developing strong study habits all mean that Greenford High is a dynamic yet disciplined place to learn. Almost all of our students begin in Year 7 and progress through to Year 13, with many gaining places at top Russell Group universities, well-equipped to study a wide array of courses ranging from Medicine, Engineering and Law to the Arts.

Our passion for learning, however, extends well beyond academic life. We work hard to develop the cultural, sporting, moral and social aspects of our students, and encourage full, active participation in a wide range of activities. Our school year is packed with sports tournaments, drama productions, trips, charity work and extra-curricular clubs. We are known for strong relationships between staff and students; this means that individual talents are nurtured and challenges are overcome quickly.

Our students are well behaved, polite, hardworking, respectful and caring. The values we instil create a happy, tight-knit community, affirming our motto that together we are 'learning to succeed'.

Greenford High School is a unique place to grow, develop and succeed. I extend a warm welcome to you and your family to visit us and discover all that we have to offer.

Mrs M Pye, Headteacher





EXCELLENCE IS A HABIT

Our mission statement sets out our expectations clearly: 'In the words of Aristotle, excellence is a habit.' We expect and aim for excellence at all times, in everything that we do, and we demand the same from our students.

Excellent Teaching

- Our relentless focus on delivering outstanding lessons means that we consistently outperform other local and national schools.
- All of our carefully selected teachers are highly qualified specialists with strong qualifications, many at postgraduate level.
- We will always 'go the extra mile' for our students, offering study spaces after school, running bespoke revising sessions, providing individual support and using digital platforms to support learning.
- We tailor our teaching to students' needs, using stretch and challenge for the most able and supporting those who need it with additional literacy and numeracy.

Excellent Opportunities

- Our innovative curriculum offers a huge range of courses from the full range of core academic disciplines through to Economics, Business Studies, Photography and Psychology.
- At GHS we believe that a strong character will help students achieve success in school and beyond. We create opportunities to develop each of our character strengths: community, compassion, courage, responsibility and resilience.
- Our strong links and outreach work with higher education providers mean that many of our students are successful in obtaining places at Russell Group universities, including Oxford and Cambridge, as well as Harvard and Princeton in the USA.
- We care about the cultural life of our students and offer over 120 trips a year; run a huge range of successful sporting activities and teams; encourage participation in a variety of clubs and events; and celebrate our diversity with an annual International Day."

FROM PRIMARY, TO SECONDARY, TO UNIVERSITY

Moving from primary school to secondary school brings new challenges and exciting opportunities. At Greenford High, we do everything we can to help students to settle in quickly and make the most of their first two years.

How do we help your son or daughter settle into secondary school?

- We have a dedicated Transition Team who visit all local primary schools and meet the students.
- We meet all parents during transition workshops and Welcome Evenings
- We have two Induction Days for students - one in July and one in September.
- Parents meet form tutors in October, subject teachers in the Spring and have a Raising Achievement Day reflecting on progress just before Easter.
- Enrichment activities take place throughout the academic year to help build social skills and engage students in learning outside of the classroom.
- With a large number of clubs ranging from sports, music, STEM and chess, there is something for everyone.
- We focus on our GHS Character Strengths in weekly assemblies and during form time. When students demonstrate our character strengths we praise and reward through post-cards, shout outs, certificates, trips and hot chocolate mornings with the Headteacher.

How do we help students to 'learn to succeed'?

- **Habits:** There is a strong focus on routines at Key Stage 3. This helps our students develop the behaviours and study skills required to succeed academically.
- **High expectations:** We expect every student to be proud of being part of our community and follow our three school rules READY RESPECT SAFE.
- **An intelligent curriculum:** While offering a broad and varied curriculum, we focus on key skills in Years 7 and 8 to develop strong proficiency in English and Maths.





The i-Block

Our purpose built i-Block, used by year 7, acts as a bridge for students transitioning into secondary school. I-Block has a well-resourced library, laptop trolleys for use in lessons and a designated MUGA for students to use during break and lunch. In addition, there is a designated centre for more vulnerable students. During their first year, students are able to build good habits in a smaller and calmer environment.

We have enjoyed being in i-block very much and love having a year 7 space. I-block has helped us transition into a new environment and get used to being in secondary school. We have made many new friends and we feel safe."

SIDRA AND MEGAN,, YEAR 7 STUDENTS



TEACHER PROFILE

Ms K Topiwalla

BSC IN BIOCHEMISTRY AT
IMPERIAL COLLEGE LONDON

"Thanks to my school days at Greenford, I went on to study Biochemistry at Imperial College London. I have now returned as a Teacher of Science and love being a part of this community."



ACHIEVING EXCELLENT GCSE RESULTS



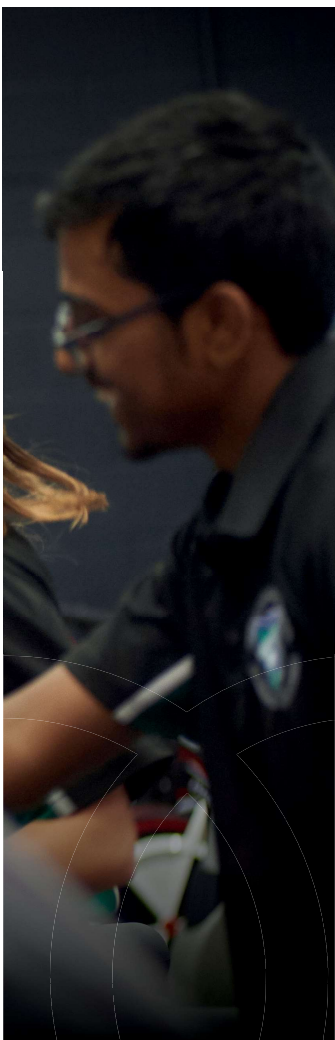
We know how important good GCSE results are for you and your child and we have a proven track record of delivering excellence.

How do we help students to achieve great results?

Every student is different, so we design plans and strategies that suit individuals. In addition to the timetabled lessons with our experienced team of teachers, students can benefit from:

- An after-school study club which provides a quiet, supportive environment for students to complete work.
- A range of interventions in subjects where students need extra support.
- Revision programmes during the holidays and after school.
- A variety of digital technology is used to help support learning and revision.
- Information is sent home regularly focusing on achievement and we offer a variety of events for students and families so that you can understand how best to support your child's GCSE journey.

To help us achieve consistently outstanding results for our most capable learners, additional stretch and challenge is provided through refined setting along with extra-curricular opportunities that offer breadth and depth beyond the standard curriculum.



When do students choose their GCSE options?

Students will select up to four additional subjects at KS4, alongside the core GCSEs in English, Maths and Science. GCSE exams are sat in the Summer term of Year 11. Careers education is an important focus at GHS and we offer students advice about progression that will help them make informed decisions about subject choices. In Year 9, we provide additional guidance so that parents can help students choose the right options for them.

"We provide a 'broad and balanced' curriculum to provide students with the core knowledge and skills they need for further study and employment, while encouraging them to pursue their academic interests and reach the highest levels of achievement"

MR A BUSH, ASSISTANT HEAD TEACHER RESPONSIBLE FOR CURRICULUM



Mr I Lall

BIOMEDICAL ENGINEERING AT
QUEEN MARY, UNIVERSITY OF LONDON

"We are very lucky to have so many staff who go above and beyond to support students in Saturday and holiday sessions in the run up to exams. This consolidation of skills ensures that many students consistently achieve grades above their targets."

STEPPING UP TO THE SIXTH FORM AND BEYOND

From the beginning of Year 7, our students know that their ultimate goal is succeeding beyond GCSEs, securing their future places at university and creating opportunities in the world of work.

The vast majority of our students stay on at our sixth form after taking their GCSEs and many others choose to join us. What is so special about our Post-16 provision?

- Our history of success - for many years our students have gained outstanding results at Post-16. Former Greenford High students are currently studying at universities across the whole of the UK and the USA, including Oxford, Cambridge, Princeton and Harvard and the full range of Russell Group institutions.
- We offer a vast range of A Level and Level 3 BTEC qualifications and pride ourselves on the variety of courses that students can choose from.
- Our pastoral support is second to none. Every Year 12 and Year 13 student is allocated a personal tutor, and our team of Post-16 Learning Managers are dedicated to meeting the pastoral needs of sixth form students.
- The strength of our Post 16 centre lies in the strength of our teachers. We have great depth and experience in our team. Our teachers join us from some of the most prestigious universities in the country and many have industry experience prior to teaching, ranging from law and finance to scientific research
- Post-16 students have exclusive access to the sixth form centre, an entire floor in one of the largest blocks in the school. The centre has a study room containing over 100 computers and a large common room for relaxing with friends.
- We offer an extensive extra-curricular programme from Post 16 clubs and societies to enrichment trips. You will get the chance to visit the theatre or opera and some of the country's top universities. There is something for everyone and we look forward to you furthering your interest in drama, music sport or finding a new passion.





We pride ourselves on sending our most academic students to Oxford and Cambridge each year, alongside our other Russell Group acceptances. Over eighteen months, we offer rigorous support in the application preparation and admissions test guidance. We also offer trips to universities and conduct countless interview preparation sessions (including formal interviews with Oxbridge alumni who are working on the relevant field). Our students are well prepared for the highly competitive process and enjoy the process!

HEBE WESTCOTT – HEAD OF YEAR 13 & OXBRIDGE LEAD



TEACHER
PROFILE

Mr H Shah

MSCI IN MATHEMATICS AT UCL; MSC IN
PURE MATHEMATICS AT KING'S COLLEGE LONDON

"I firmly believe that the greatest indicator of success at A Level is a student's capacity for hard work. Any student that is willing to invest a substantial amount of their time in their subjects is almost guaranteed to succeed."





LEARNING TO SUCCEED THROUGH A WEALTH OF OPPORTUNITIES

We take an enormous amount of pride in developing our students outside of the classroom through sport, clubs and a broad range of cultural activities. Our clubs in school cater for a wide range of interests including STEM, trampolining, languages, debating, football, cricket and drama.

**In addition, we typically run over 150 trips per year.
A selection of some of our trips:**

- Kew Gardens
- House of Commons
- University Visits
- Chiswick House and Gardens
- Go Ape
- Whipsnade Zoo
- Thorpe Park
- Legoland
- National Portrait Gallery
- Tower of London
- National Theatre
- Lyceum Theatre
- Denham Country Park
- Bank of England
- St Pauls Cathedral
- Wembley Stadium
- National History Museum
- Science Museum
- River Thames Cruise
- Sherlock Escape Room
- Royal Opera House
- Harrow School Chess Club
- Keats House
- BFI Southbank
- Brompton Bike Factory
- Duke of Edinburgh
- Juniper Hall
- iFly Basingtoke

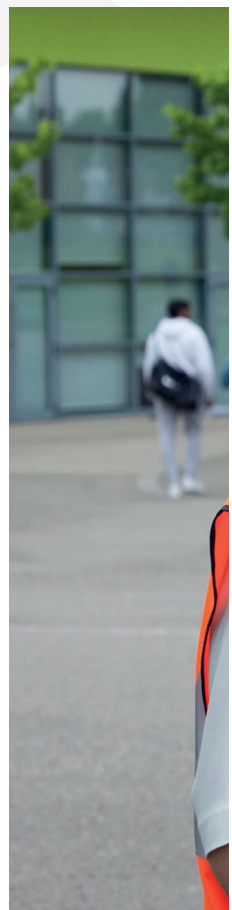




SUPPORT, WELLBEING AND PASTORAL CARE

For any child to learn to succeed, we know that support and opportunities to develop as an individual are crucial. At Greenford High, we offer a range of support structures to ensure that school is a happy, positive, safe and inspiring experience for all students.

- We believe that to achieve maximum success, the school, parents and students must work together. We therefore partner closely with our parents from the moment our students enter the school.
- For each year group, there is a Head of Year, two Deputy Heads of Year and a Pastoral Support Worker. Alongside the year team, all students have at least one form tutor to support them as an academic mentor, pastoral carer and the main point of communication between home and school.
- Our Inclusion Team ensures that students who need additional help are able to access the curriculum through a range of interventions. We also provide emotional support to students who are vulnerable through counselling, mentoring and liaison with external agencies.



"I wanted to be a part of the JLT as I used to be in the school council in my primary school. As I went on to secondary school, I saw how mature and professional the JLT were and this inspired me."

ARYAN (YEAR 8)



Student Leadership Opportunities

We understand that providing an opportunity to lead is crucial to developing the confidence and skills to succeed outside of school. We provide a range of leadership opportunities at Greenford including:

- The Junior Leadership Team (JLT), who mirror Senior Leadership roles and are involved in the decision making processes in the school.
- The chance to take part in interviewing new staff.
- Opportunities to be mentored by post-16 students
- Members of different committees to drive school improvement
- Hosting school tours
- Presenting to the student body in assemblies and tutor time
- Helping with after-school events and volunteering in our local community
- Leading focus groups to ensure student voice is established on school changes



"I applied to the JLT so I could have a place to voice my concerns and any improvements that could help our school community. It's given me the opportunity to talk to new people and understand different viewpoints. I'm more confident now speaking publicly."

SANAYA (YEAR 10)



TEACHER PROFILE

Mrs L Grimley

ASSISTANT HEAD, INCLUSION AND SAFEGUARDING.
BA IN ENGLISH LITERATURE AND LANGUAGE AT
UNIVERSITY OF OXFORD

"The best thing about Greenford High School is that we recognise the importance of developing the whole child. We challenge academically, with great success, but we also nurture, care and safeguard our students exceptionally well."

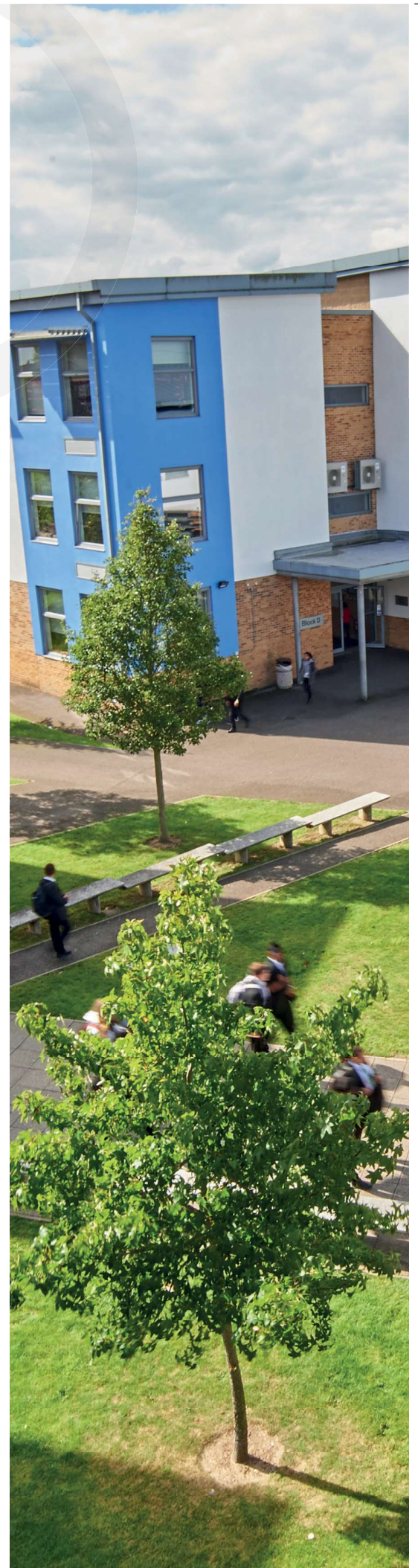
OUR MISSION STATEMENT

Learning to succeed is what Greenford High School is about: a love of learning; the motivation to succeed.

Our aim is for students to fulfil their limitless potential - through perseverance and effort. Excellence, in the words of Aristotle, is not an act but a habit.

We don't select our students, but we do select our staff. Each highly trained teacher is here to support, guide, inspire our students so that whatever their starting point when they arrive, they leave with the world at their feet - equipped and ready to continue their learning through apprenticeships, at university and throughout their careers.

We aim to provide the best opportunities - academic, cultural and sporting - and a sense of moral and social responsibility so that each child realises that humanity is their business and the common good their aim.







Greenford High School
 Lady Margaret Road, Southall, Middlesex, UB1 2GU



020 8578 9152



020 8747 7892



office@greenford.ealing.sch.uk



@ghsofficial

www.greenford.ealing.sch.uk

