



# Year 10 Expectations Evening

Tuesday 4th November 2025

A copy of this presentation will be made available on our website.

Ready. Respectful. Safe



# Agenda



1. Success and Learning: Ms A Johal (For the Headteacher)
2. Post 16 Success and Admissions: Ms A Johal (Deputy Headteacher)
3. Academic Support and independent learning: Ms P Henderson-Barnes (Assistant Head)
4. Pastoral support: Mrs Allen (Head of Y10)
5. End

---

COMMUNITY COMPASSION COURAGE RESPONSIBILITY RESILIENCE





# Success and Learning

COMMUNITY COMPASSION COURAGE RESPONSIBILITY RESILIENCE



# Lots to Celebrate!



- Strong results across the board at GCSE and A Level.
- Excellent retention into our 6th form.
- Outstanding number of students attending university, including Russell Group universities, Oxford and Cambridge and distinguished London institutions.



COMMUNITY COMPASSION COURAGE RESPONSIBILITY RESILIENCE



# Key Messages

- A crucial 2 years - GCSEs are the gateway to success.
- Your child should expect to be working really hard.
- If you have any concerns about your child's mental health, or the possibility of bullying, stress, anxiety or behaviour concerns, please seek support from your year team.
- We have a wealth of pastoral interventions available, and robust systems to stamp out bullying.



COMMUNITY COMPASSION COURAGE RESPONSIBILITY RESILIENCE



# Contact Details



Please ensure we have up-to-date contact details:

- Postal address
- Home phone
- Mobile phone
- Email.

---

COMMUNITY COMPASSION COURAGE RESPONSIBILITY RESILIENCE



# Post 16 and Progress



**Ms A Johal**

**Deputy Headteacher**

[ajohal@greenford.ealing.sch.uk](mailto:ajohal@greenford.ealing.sch.uk)

---

COMMUNITY COMPASSION COURAGE RESPONSIBILITY RESILIENCE



# Post 16



**We are very proud of our Post 16 centre - it is excellent.**

- **One in three grades** were awarded at the very top end!
- We supported **231 students to progress** onto university or apprenticeships this Summer.
- Our students **thrive academically** and personally.

COMMUNITY COMPASSION COURAGE RESPONSIBILITY RESILIENCE

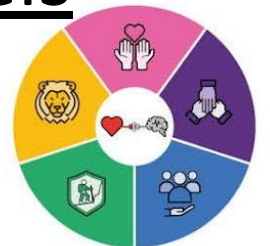


# Post 16



- We have over 1500 applications every year for 250 places.
- We usually fill 70% of those spaces from our own Y11 cohort.
- We have a very broad curriculum including over 175 students who study A level Maths.
- We support students who want to study traditional A levels and also BTEC courses.

COMMUNITY COMPASSION COURAGE RESPONSIBILITY RESILIENCE



# Post 16



What is the criteria to join our sixth form centre?

- Good attendance record in Y10 and Y11 (above 95%)
- Good punctuality.
- Good behaviour in and outside of school as well as exams.
- No suspensions in Y11.

**Our admissions policy is available on our website.**

---

COMMUNITY COMPASSION COURAGE RESPONSIBILITY RESILIENCE



# Post 16



To study A levels:

- students will need grades 5 or 6 in E & M plus at least 4 more good passes (5+).

To study BTEC courses:

- students will need grades 4 or 5 in E & M plus 4 more passes.

---

COMMUNITY COMPASSION COURAGE RESPONSIBILITY RESILIENCE



# Y10 Starting Point



This is where your child was academically at the start of Y10. Three questions for your own self reflection:

1. What are the GCSE English, Maths and Science attainment grades that your child is currently working at?
2. How close are they to achieving a grade 5 or 6 in each subject?
3. What about their attitude to learning? How can this be improved?

---

COMMUNITY COMPASSION COURAGE RESPONSIBILITY RESILIENCE



# Academic Progress



Academic Progress throughout Y10 and Y11:

- On average, students can go up by 2 to 3 grades from the start of Y10 to the end of Y11.
- Students can go up by 3+ grades by having a focused programme of revision and independent work.

—  
COMMUNITY COMPASSION COURAGE RESPONSIBILITY RESILIENCE



# Attitude to Learning



Please look at the attitude to learning levels on your child's report. There is a direct link to the effort students put into their subjects and their attainment.

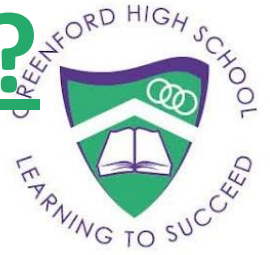
Please discuss any of the following with your child immediately:

- 4/5 for attitude to learning
- Behaviour concerns - 'B'
- Homework concerns - 'H'

COMMUNITY COMPASSION COURAGE RESPONSIBILITY RESILIENCE



# How can I help my child with GCSE Maths?



https://www.mathsgenie.co.uk/gcse.php

Maths Genie

GCSE A Level Maths A Level Papers KS2 Revision

### Grade 4

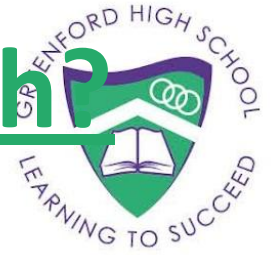
#	Videos	Exam Questions	Exam Questions Booklet	Solutions
4.1	Compound Interest and Depreciation	Exam Questions	Compound Interest and Depreciation	Solutions
4.2	Indices	Exam Questions	Indices	Solutions
4.3	Prime Factors, HCF and LCM	Exam Questions	HCF, LCM	Solutions
4.4	Real Life and Distance Time Graphs		Real Life Graphs	Solutions
4.5	Inequalities	Exam Questions	Inequalities	Solutions
4.6	Forming and Solving Equations	Exam Questions	Forming and Solving Equations	Solutions
4.7	Sequences (Nth Term)	Exam Questions	Sequences (nth term)	Solutions
4.8	Expanding and Factorising	Exam Questions	Expand and Factorise	Solutions
4.9	Pythagoras	Exam Questions	Pythagoras	Solutions
4.10	Angles in Parallel Lines	Exam Questions	Angles in Parallel Lines	Solutions
4.11	Angles in Polygons	Exam Questions	Angles in Polygons	Solutions
4.12	Surface Area	Exam Questions	Surface Area	Solutions
4.13	Volume of a Prism	Exam Questions	Volume of Prisms	Solutions
4.14	Cylinders	Exam Questions	Volume and Surface Area of Cylinders	Solutions
4.15	Loci and Construction		Loci and Construction	Solutions
4.16	Bearings		Bearings	Solutions
4.17				

[www.mathsgenie.co.uk](http://www.mathsgenie.co.uk)

COMMUNITY COMPASSION COURAGE RESPONSIBILITY RESILIENCE



# How can I help my child with GCSE English?



## How you can help child:

1. Ensure they read every day - fiction and non-fiction.
2. Select a news article to read **together** and ask them to explain what they learn about the **topic discussed**.
3. Ask your child to show you their homework, Google Classroom resources or teacher feedback.

COMMUNITY COMPASSION COURAGE RESPONSIBILITY RESILIENCE



# How Can I Help my Child with Science?



1. Quiz your child in regular short chunks using the knowledge lists

2. Ensure they complete their HW every week - this includes revision activities + testing on current content.

3. Familiarise yourself with the online platforms so you can help them find + use the resources we've put together.

- Educake [www.educake.co.uk](http://www.educake.co.uk)
- Google Classroom



**Biology Topic: Cell Biology**  
**Paper 1**      **Revision Guide: Higher = pg. 11-23    Foundation = pg. 11-23**  
 Quizlet link:

Key Question	Answer
What is a Eukaryotic cell?	A cell with a nucleus containing DNA.
What is a Prokaryotic cell?	Example = Plant and Animal Cells A cell without a nucleus (DNA is loose) Example = Bacteria Cell
Which parts are in an animal cell?	Nucleus, Cell membrane, Cytoplasm, Mitochondria, Ribosomes
Which parts are in a plant cell?	Nucleus, Cell membrane, Cytoplasm, Mitochondria, Ribosomes, Cell wall, Chloroplasts, Vacuole
What is the equation for magnification?	Magnification = $\frac{\text{Image Size}}{\text{Actual Size}}$ Remember: The units for both sizes must be the same e.g. both in µm so you may need to convert them.
How are new cells made?	Body cells = Mitosis Sex cells = Meiosis
Why do cells need to make new copies of themselves?	So organisms can grow To repair damage
What are stem cells?	Undifferentiated cells. They can specialise to become all other types of cells.
What are the two types of stem cells?	Embryonic Stem Cells = Can differentiate into all types of cells. Adult Stem Cells = Can only differentiate into some cells.
Where are animal and plant stem cells produced?	Embryonic = Embryos Adult = in bone marrow
What is therapeutic cloning?	Plac = in marionette tissue Embryonic stem cells have their DNA removed and replaced by the patient's DNA. Stem are then used to treat medical conditions.

Key Language		
Spelling	Definition	Achieved?
Nucleus	A cell part that contains DNA and controls the activity of the cell	
Cell membrane	A cell part that controls what can enter and leave the cell	
Cytoplasm	Where reactions take place in the cell	
Mitochondria	A cell part that releases energy by carrying out respiration	
Ribosome	A cell part that synthesises (makes) proteins	
Cell wall	A cell part that makes the cell rigid	
Chloroplasts	A cell part that absorbs light energy for photosynthesis, which creates food (glucose) for the plant	
Vacuole	A cell part that stores sap (or sugary liquid)	
Mitosis	Cell division. Creates 2 cells which are identical to the original cell	
Meiosis	Cell division. Creates 4 cells which have half the DNA of the original cell	
Diffusion	Spreading out of particles from a high concentration to a low concentration	
Osmosis	Movement of water particles from a high concentration to a low concentration, across a partially permeable membrane	
Active Transport	Movement of particles from a low concentration to a high concentration using energy.	

COMMUNITY COMPASSION COURAGE RESPONS



# Year 10 team



**Mr Bush** – Attached member of SLT

**Ms Allen** – Head of Year 10

**Mr Moors**

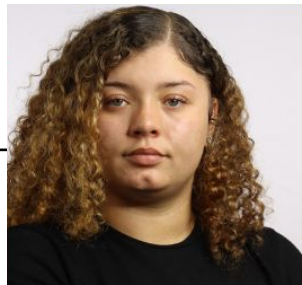
**Ms Brady**

**Mr Parry**

Deputy Head of Year

Pastoral Support  
Worker

Deputy Head of Year



[ABush@Greenford.ealing.sch.uk](mailto:ABush@Greenford.ealing.sch.uk) - Mr Bush

[AAllen@Greenford.ealing.sch.uk](mailto:AAllen@Greenford.ealing.sch.uk) - Ms Allen

[JMoors@Greenford.ealing.sch.uk](mailto:JMoors@Greenford.ealing.sch.uk) - Mr Moors

[SParry@Greenford.ealing.sch.uk](mailto:SParry@Greenford.ealing.sch.uk) - Mr Parry

[JBradyHowse@Greenford.ealing.sch.uk](mailto:JBradyHowse@Greenford.ealing.sch.uk) - Ms Brady

COMMUNITY COMPASSION COURAGE RESPONSIBILITY RESILIENCE



# What can I expect from Ms Allen and the team?



- **Start of the GCSE year focused and Ready**
- **100% Attendance**
- **Work Hard**
- **Be kind**

Ready. Respectful. Safe



# What we are doing well at so far in Year 10

- A2L in lessons
- Uniform
- Behaviour as a whole has been positive
- teacher praise
- General attitude



Ready. Respectful. Safe



# Safeguarding



Gurvinder Nayyar

Assistant Headteacher of  
Inclusion & Designated  
Safe-guarding Lead

Location: AF08

[gnayyar@greenford.ealing.sch.uk](mailto:gnayyar@greenford.ealing.sch.uk)



Niloo Adhami

Deputy Designated Safe-  
guarding Lead and  
Mental Health Lead

Location: AG 16

[nadhami@greenford.ealing.sch.uk](mailto:nadhami@greenford.ealing.sch.uk)



Rav Dhindsa

Assistant headteacher of  
Behaviour & Child  
Protection Officer

Location: BG04

[rdhindsa@greenford.ealing.sch.uk](mailto:rdhindsa@greenford.ealing.sch.uk)



Monika Sierkowska

CP Officer &  
Administration

Location: AG 16

[msierkowska@greenford.ealing.sch.uk](mailto:msierkowska@greenford.ealing.sch.uk)



Angela Thomas

CP Officer & CLA  
Coordinator

Location: AG 16

[athomas@greenford.ealing.sch.uk](mailto:athomas@greenford.ealing.sch.uk)

COMMUNITY COMPASSION COURAGE RESPONSIBILITY RESILIENCE





# KS4 Intervention & Academic Support

**Ms P Henderson-Barnes**

**Assistant Headteacher**

[phendersonbarnes@greenford.ealing.sch.uk](mailto:phendersonbarnes@greenford.ealing.sch.uk)

---

COMMUNITY COMPASSION COURAGE RESPONSIBILITY RESILIENCE



# Key Stage 3 to Key Stage 4



**4 areas to focus on this year:**

**The Step Up.**

**The non-negotiables.**

**Building habits for success.**

**The home-school partnership.**

---

COMMUNITY COMPASSION COURAGE RESPONSIBILITY RESILIENCE



# Key Stage 3 to Key Stage 4 'The Step Up.'



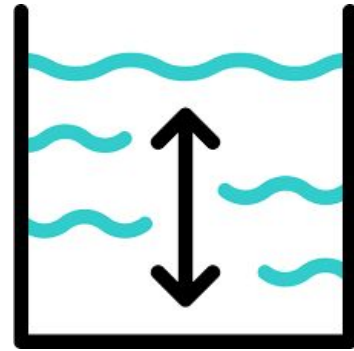
**Pace**

**Depth**

**Rigor**

**Independence**

**The Linear challenge**



COMMUNITY COMPASSION COURAGE RESPONSIBILITY RESILIENCE



# Key Stage 3 to Key Stage 4

## 'The non-negotiables.'



### 1. Attendance:

- Our target is **96%+** for every student.
- "90% attendance = **Half a day of school missed every week.**"
- Over two years, this is nearly **40 days** of lost learning.
- Message: "Be here." You can't learn if you aren't present.

### 2. Attainment:

- Treating each lesson with the same importance and spreading out our time evenly.
- Treating piece of classwork and homework with the same importance as the real GCSEs.

### 3. Attitude to Learning:

- We expect proactive, positive, and resilient learners.
- "First-Time-Ready": listening, focused, and participating.



COMMUNITY COMPASSION COURAGE RESPONSIBILITY RESILIENCE



# Key Stage 3 to Key Stage 4

## 'Building habits for success.'



### Homework:

- It is **not optional**. It is the primary tool for consolidating classroom learning.
- Expect ~1.5 hours per night.
- It will be set regularly via SatchelOne.

### Equipment:

- The "Basic 5": Pen, pencil, ruler, rubber, planner.
- **The "Game Changer": A Scientific Calculator.** They *must* have their own and bring it to every Maths and Science lesson.



### Revision:

- Revision starts in Year 10, not two months before the Year 11 exams.
- We will teach students *how* to revise effectively, not just *what* to revise.

COMMUNITY COMPASSION COURAGE RESPONSIBILITY RESILIENCE



# Key Stage 3 to Key Stage 4

## 'The home-school partnership.'



- **The "Basics"**: Champion our attendance and punctuality expectations. Don't book holidays in term time.
- **The "Space"**: Create a quiet, designated workspace for homework.
- **The "Conversation"**: Ask "What did you learn today?" instead of "How was school?" Check their planner/homework app with them.
- **The "Balance"**:

**Monitor screen time** and mobile phone use.

Ensure a sensible bedtime. A tired brain cannot learn.

Encourage them to maintain a hobby/sport for wellbeing.

- **The "Contact"**: Stay in touch. Read our communications. Attend Parents' Evenings. Trust your instincts—if something is wrong, talk to us. —

COMMUNITY COMPASSION COURAGE RESPONSIBILITY RESILIENCE



# Thank you for attending our Year 10 Expectations Evening

