



Greenford High School

Year 6 Transition Workshops

June 2026

Ready. Respectful. Safe



Welcome!



We are very excited to have you join our Greenford High School community.

Today's presentation is to talk you through some key expectations and is available to you online.

Please ensure phones are on silent or switched off.

If the fire alarm sounds, staff will instruct you on what to do.

—
COMMUNITY COMPASSION COURAGE RESPONSIBILITY RESILIENCE



Key members of staff



- Your child's tutor.
- Your child's Head of Year, Deputy Head of Year, & pastoral support worker.

- KS3 Year Achievement Leader - **Ms Hughes.**



- The attached senior member of staff - **Miss Phull.**



COMMUNITY COMPASSION COURAGE RESPONSIBILITY RESILIENCE



Key members of staff



- The Designated Safeguarding Lead - **Ms Nayyar.**



- Deputy Headteachers - **Ms Johal and Mr Balu.**



- Headteacher - **Mrs Pye.**



COMMUNITY COMPASSION COURAGE RESPONSIBILITY RESILIENCE



Ambitious for all at GHS



What do we all want to achieve:

- **We are “Ambitious for all” GHS students.**
- Y6 to settle into secondary school;
- Positive attitudes to learning;
- Motivated students;
- Students to develop good habits;
- Independent and resilient young leaders;
- Happy, well rounded individuals who make good choices;
- **Academic excellence.**



COMMUNITY COMPASSION COURAGE RESPONSIBILITY RESILIENCE



What we do

The Greenford Way



READY

- ✓ Smart
- ✓ Attendance
- ✓ Punctuality
- ✓ Organised

RESPECTFUL

- ✓ Work Hard
- ✓ Respect
- ✓ Value

SAFE

- ✓ Safe behaviour at all times

COMMUNITY COMPASSION COURAGE RESPONSIBILITY RESILIENCE



What we expect

Ready - Uniform



We have high expectations, our students must be in perfect uniform every day.



- ✓ School blazer. (Trim on the lapel is no longer required).
- ✓ There is a school skirt, knee length, with pleats so that it is easy and safe for girls to move around the school site. Long skirts are not acceptable.
- ✓ Trousers must be loose-fitting. No jeggings, skinny trousers or leggings.
- ✓ Students must wear a clip on school tie - green ties.
- ✓ Students must wear school approved shoes.
- ✓ Shirts must always be tucked in.

Students need to be dressed smartly so that they are focused and ready to learn.

COMMUNITY COMPASSION COURAGE RESPONSIBILITY RESILIENCE



Uniform Expectations



Recommended school shoes



Sports Direct £20

Kickers £40-65



Clarks £95



Sport Uniform

- ✓ Do wear a green, black, purple, white or school scarf.
- ✓ Do wear green, black, purple, white hijabs.
- ✗ Don't wear patterns or non-school colours on scarves or hijabs.
- ✗ Don't wear excessive jewellery - including decorative brooches.
- ✓ Do wear A-line knee length skirts.
- ✗ Don't wear light trousers, jeans or short skirts.
- ✓ Do wear supportive black leather shoes not canvas.



COMMUNITY COMPASSION COURAGE RESPONSIBILITY RESILIENCE



Ready - Uniform



Please ensure that your child always has the right uniform. If students come into school with the incorrect uniform, this will result in the following:

- ✓ Students being given a behaviour point;
- ✓ A detention on the same day;
- ✓ Students may have to wear a 'loaned item';
- ✓ For on-going concerns, we will ask parents to come in.



If you have concerns about the purchasing of any of the uniform, please let us know. This will also apply once your child starts with us as some families may be entitled to some help with uniform.

COMMUNITY COMPASSION COURAGE RESPONSIBILITY RESILIENCE



Clarity on uniform issues

Students are not allowed:

- Lines in hair
- Dyed hair
- 2-tone hair
- Nail polish/false nails
- Make up
- False eyelashes
- Nose piercings
- More than 1 stud per ear



What we expect

Ready - Attendance



We expect all students to have a 100% attendance record – that's the aim!

- ✓ Book medical appointments in the school holidays/weekends.
- ✓ If your child is unwell and not being sick or a temperature, please send them in with a note.
- ✓ Some students mistake being tired for being ill, make sure that they get to bed early and on time.
- ✓ After 5 days of unauthorised absences, you can be fined £160



COMMUNITY COMPASSION COURAGE RESPONSIBILITY RESILIENCE



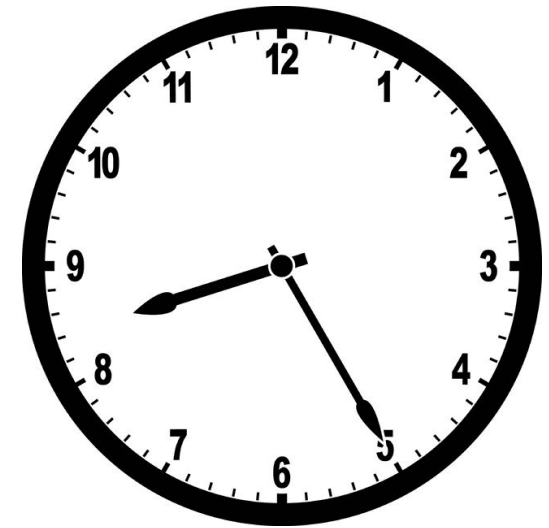
What we expect

Ready – Punctuality



Every minute of the school day is important and valuable to your child, please ensure that they are here every morning by 8:20 (the school day starts at 8:30) by the latest. If your child is late the following will happen:

- ✓ They will be in detention on that day for 30 min after school;
- ✓ They will miss important information in lessons/form time;
- ✓ For repeated lateness, they will get an Internal Exclusion Day.
- ✓ After 10 lates, you can receive a fine of £160



COMMUNITY COMPASSION COURAGE RESPONSIBILITY RESILIENCE



Ready – Punctuality



We also expect our students to be on time to every lesson.

Moving from classroom to classroom is something that might be new for our Year 6 students, so may take getting used to.

We have school bells that ring at different times during the day:

- at the end of registration and the start of Period 1;
 - 5 minutes before the end of break and then the end of break;
 - 5 minutes before the end of lunch and then the end of lunch.
-
- The 1st of these bells is always to start students moving.
 - They should be in their lessons when the 2nd bell goes.
 - If they are not, they will get a 15 minute detention.



COMMUNITY COMPASSION COURAGE RESPONSIBILITY RESILIENCE



What we expect

Ready - Organised



Organisation is a key skill in settling into secondary school as well as being successful so please make sure your child:

- ✓ Has all the correct equipment;
- ✓ Packs their bag every night for the next day;
- ✓ Completes all of their homework;
- ✓ Writes everything in their planners and checks **Show My Homework**;
- ✓ Checks their **Google Classroom** every evening;
- ✓ Gives you their planner to sign every week.



COMMUNITY COMPASSION COURAGE RESPONSIBILITY RESILIENCE



Ready - Organised



Equipment needed:

- ✓ Scientific Calculator- Casio calculators are the best ones to buy
- ✓ Maths Set-protractor, ruler and a pair of compasses
- ✓ Black/Blue Pen x 2
- ✓ Highlighters
- ✓ Pencil x 2
- ✓ Sharpener
- ✓ Ruler
- ✓ Eraser



COMMUNITY COMPASSION COURAGE RESPONSIBILITY RESILIENCE



What we expect

Ready – Work Hard



In lessons, we expect all of our young people to work hard at all times so that they can learn and achieve. Students will have to:

- ✓ Focus in lessons at all times;
- ✓ Make sure their books are a good record of their learning and that they are proud of their books – please check their books regularly;
- ✓ Complete all of their homework - you can keep a close eye on this by signing up to **Show My Homework**.



COMMUNITY COMPASSION COURAGE RESPONSIBILITY RESILIENCE



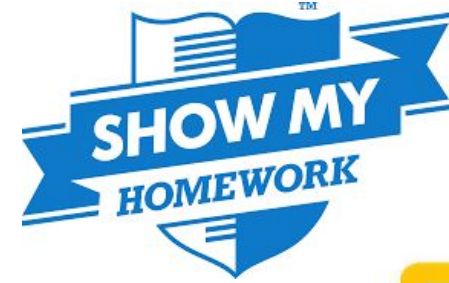
What we need from you!

Work Hard - Homework



We will set on average 1 hour of homework per day; students should be reading on top of this. Please make sure that your child always completes their homework. The ways in which you can support your child are:

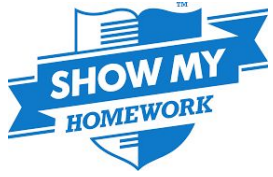
- ✓ Make a space where they can work;
- ✓ Set up a routine for the evenings
 - ✓ Have a snack and watch TV
 - ✓ Do homework every evening for 1 hour
 - ✓ Reading for at least 20 minutes;
- ✓ Check their planner and **Show My Homework** everyday;
- ✓ Check their **Google Classroom** too;
- ✓ Make sure that they have completed their work;
- ✓ Make sure they pack their bag with the homework.



COMPLETING THEIR HOMEWORK IS THE RESPONSIBILITY
OF EVERY CHILD

COMMUNITY COMPASSION COURAGE RESPONSIBILITY RESILIENCE





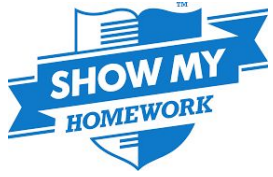
Show My Homework



- **Show My Homework (SMHW)** is an online platform.
- It is used to set and monitor homework.
- It supports students' independent learning.
- It is run by **Satchel: One** and accessed via their mobile phone app.
- Teachers set all homework tasks on **SMHW**.
- Students can check what they need to do on their phones.
- Parents can also check, using the same app.
- It makes homework a lot clearer for everyone.

COMMUNITY COMPASSION COURAGE RESPONSIBILITY RESILIENCE





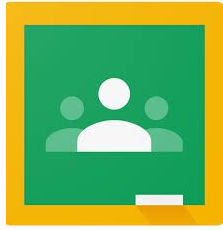
Show My Homework



- You will be emailed more details about **SMHW** in September.
- You will receive your family's login details and instructions.
- More than one person can sign up for each child (i.e. both parents).
- Please sign up straight away, but let us know if there are any issues.
- You will then get notifications when teachers set homework.
- They will outline the tasks so you can discuss them with your child.
- They will also inform you of the deadline date.
- All parents and carers must sign up to **SMHW**.
- You will be able to see character points and your child's behaviour record.

COMMUNITY COMPASSION COURAGE RESPONSIBILITY RESILIENCE





Google Classroom



- **Google Classroom** is an online platform which works in conjunction with **Show My Homework**.
- Students will have a virtual 'classroom' to join for each of their classes.
- All the resources that students need from their lessons to complete homework and revision will be stored here.

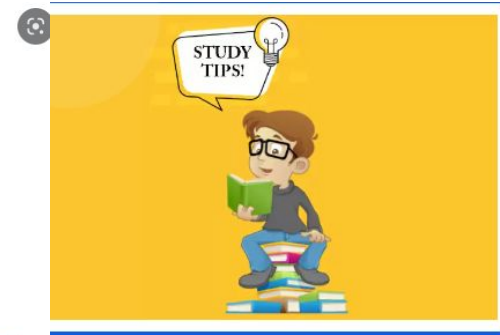
The screenshot shows the Google Classroom interface for a class named 'Ms McCarthy Year 11 Literature'. At the top, there are navigation tabs for 'Stream', 'Classwork', 'People', and 'Grades'. Below the navigation is a header image featuring a group of characters from the TV show 'Inspector Morse' with the text 'Ms McCarthy Year 11 Literature' overlaid. To the right of the header is a 'Customize' button. Below the header, there is a 'Meet' section with a 'Generate link' button and an 'Announce something to your class' section with a text input field and a 'Post' button.



What we do. Homework Club



Monday and Wednesday
(3:00pm-4:00pm)



COMMUNITY COMPASSION COURAGE RESPONSIBILITY RESILIENCE



What we do - Support homework



- A quiet place for students to come and do their homework.
- A safe place where they can get help on their homework-students helping students.
- Staff will be available to help students with their homework should they need help.
- A place where you have access to devices to complete your homework.



COMMUNITY COMPASSION COURAGE RESPONSIBILITY RESILIENCE



What we expect.

Respectful

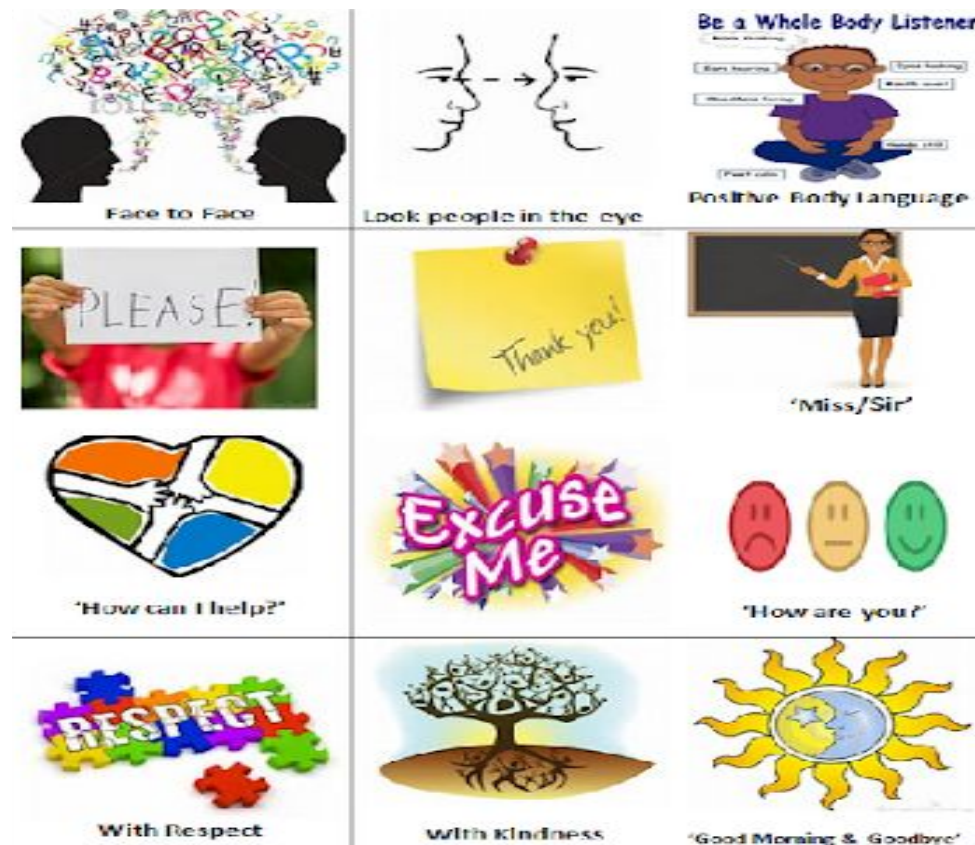


Our aim is to develop our young people's professional skills, so that they are ready for their futures.

At GHS, we treat everyone with respect, as we would like to be treated.

Diversity is celebrated.

Bullying is not tolerated in any form.



COMMUNITY COMPASSION COURAGE RESPONSIBILITY RESILIENCE



What we do. Character Points



- Students will receive Character Points for their contributions in the following areas: community, compassion, courage, responsibility and resilience.
- Students will complete their Character passports to earn badges,
- Students will receive rewards as per our Character Points Tariff to celebrate their success.

Responsibility - Being accountable for the decisions you make			
Responsibility in action	Date achieved/ Teacher signature	Date achieved/ Teacher signature	Date achieved/ Teacher signature
I had my absolute best in my homework.			
I completed extra notes for my subject to consolidate my learning.			
I arrived on time to my lesson every day this half-term.			
I accepted the consequences of my actions by saying 'I understand.'			
I informed a member of staff of my wrongdoings before they knew.			
I emailed my teacher to ask for help/additional work.			
I have acted on my interim report to improve.			
I have set a good example to others.			
I have made sure my book is presented to the best of my ability this half-term.			

Character Points Tariff	
Number of Points	Action
0 - 20	Shout out in form (FT)
21 - 40	Shout out in Assembly (YT)
41 - 60	Positive postcard home (FT)
61 - 80	Positive phone call home (FT)
81 - 100	Positive postcard home (YT)
101 - 120	Positive phone call home (YT)
121 - 150	Head teacher letter of commendation
150+	Hot Chocolate Friday / Reward Trip

COMMUNITY COMPASSION COURAGE RESPONSIBILITY RESILIENCE



What we expect.

Safe



- Students will move around I-Block in a calm and sensible manner. This also applies to other parts of the school. This is to ensure that they are all safe but also so that they can remain focused as they go into and leave lessons.
- Behaviour at break and lunchtime also needs to be safe, calm and sensible - there is to be no running around, unless you are in the MUGA, and no congregating in big groups.
- We also expect our students to be safe while making their way to and from school - road crossings should be used and students are not allowed in the petrol station before or after school.



COMMUNITY COMPASSION COURAGE RESPONSIBILITY RESILIENCE





What we do.

Behaviour Points

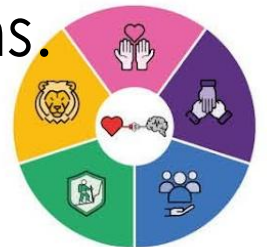
Every time any of our rules are contravened, students will get a Behaviour Point (BP). The BPs can add up and lead to a number of sanctions:

- Community service
- Detentions
- A day or two in the Internal Exclusion Room
- Suspensions from school



Please support our Behaviour Policy by accepting our sanctions and remembering that you have subscribed to our ethos and systems.

COMMUNITY COMPASSION COURAGE RESPONSIBILITY RESILIENCE



What we do.

Behaviour - Detentions



If students break any of our rules, they will usually get a detention on the same day. You will be notified by text message.

Students must attend that detention, otherwise it will be doubled in duration and/or they will receive an Internal Exclusion Day.

The timings are usually like this:

- Forgotten a book/equipment – 30 min
- Late – 30 min
- Defiance – 60 min
- More serious incidences – up to an hour



COMMUNITY COMPASSION COURAGE RESPONSIBILITY RESILIENCE



What we expect. Mobile Phones



Mobile phones are banned in school. We will confiscate your child's phone if:

- We see it in school;
- If it rings/pings;
- It has been used during school hours.



They will receive their phone up to 5 school days following confiscation (usually the following Friday).

COMMUNITY COMPASSION COURAGE RESPONSIBILITY RESILIENCE



What we need from you.

Think twice - Smart Phones



Please think twice before providing your child a smartphone. If, however, you do, make sure you:

- Make the ground rules clear;
 - How long they can use their phone for everyday (daily limit);
 - Their phone shouldn't go up to their bedrooms;
 - Check their phone regularly and spontaneously.
- Watch the language they use in their chats.
- They should not be part of a large WhatsApp group.



COMMUNITY COMPASSION COURAGE RESPONSIBILITY RESILIENCE



Top tips for parents and carers

- Don't let your child have the sites – the minimum age for most is 13.
- Check devices regularly – no password, no device.
- Keep devices downstairs or in family spaces.
- Have device-free time.
- Be empowered – you and your child.
- Remember you own the phone and are ultimately responsible.



COMMUNITY COMPASSION COURAGE RESPONSIBILITY RESILIENCE



What we do

Break & Lunch Times



Break time

- Students can buy snacks, starting at £1.00, in the I-Block cafeteria – brownies, fruit, fruity snacks etc.

Lunch time

- There are a variety of meals available each day.
- There is always a vegetarian option, and all of our meat is halal.
- Students can bring a packed lunch - please make sure it is healthy.
- If your child is entitled to free school meals, they will be able to purchase up to a certain amount each day.



COMMUNITY COMPASSION COURAGE RESPONSIBILITY RESILIENCE



What we expect. Healthy Eating



- Breakfast is a *MUST!* It provides fuel for the day...
- Lunch - healthy canteen/healthy packed lunch.
- Snacks - from home not TESCO/ROOSTERS/GREGGS.
- Energy drinks are NOT allowed.
- Sweets and crisps are NOT allowed.



COMMUNITY COMPASSION COURAGE RESPONSIBILITY RESILIENCE



What we expect from you!

Clubs and Activities



Encourage your child to take part in the wider school:

- Take up a new instrument
- Join the choir
- Attend a fitness club- before school, lunch and after school
- Chess Club, debating club, spelling bee and many more.....



	Monday	Tuesday	Wednesday	Thursday	Friday
AM		Rugby Breakfast Club 7:30am Invite only	Boxing Fitness Invite only MOR/Mr Odedra		Early Bird Fitness 7:30 RAY
		Early Bird Fitness 7:30 RAY			
Lunch/ Break		Spelling Bee LIT Lunch IF20		Living Library WIL 10:45-11am IF15	Origami Club WIC Lunch CG05
After School	Y9 & 10 Cricket SPH SAG/EBZ	Ultimate Frisbee Mr Kiddil	Junior Rugby Mr Blake	Girls Cricket Muga JUS/Ms HB	Girls Football Mr Channer Muga
	Y7 & 8 Rounders Field KEL/HOR	Eagle Boys Reading Club 3-4pm DEO IF15	KS3 Table Tennis Mr Joseph	Y9&10 Boys Fitness Mr Laryea	
	Art Club PAW EDM HAR 3-4pm EF09	DT STEM Club HIR 3:15-4:15 EG05	KS3 Softball Invite only Mr Mantey	Senior Basketball SPH Mr Harvey	
	Acepella Vocal Group BRI 3-3:45 FG17		Year 9 & 10 Rounders RAY	Year 7 & 8 Cricket Field MOR/SAG	
	Science Club RUG/NAV 3:15-4pm IG01		All years Athletics Miss HB	Chess Club ALM & HRZ 3-4:30 CG14	
			GHS Choir POP/OAG 3-4pm FG18	KS3 Band BRI 3-3:45 FG18	
			Percussion Group OAG 3-3:30 FG15		



COMMUNITY COMPASSION COURAGE RESPONSIBILITY RESILIENCE



GHS Parent Ambassadors



Monika Sierkowska



Fuad Mohamed



Silva Hilburn

Our parent ambassadors work closely with families. The support can range from a one-off check-in to a fortnightly check-in. This all depends on what families need.

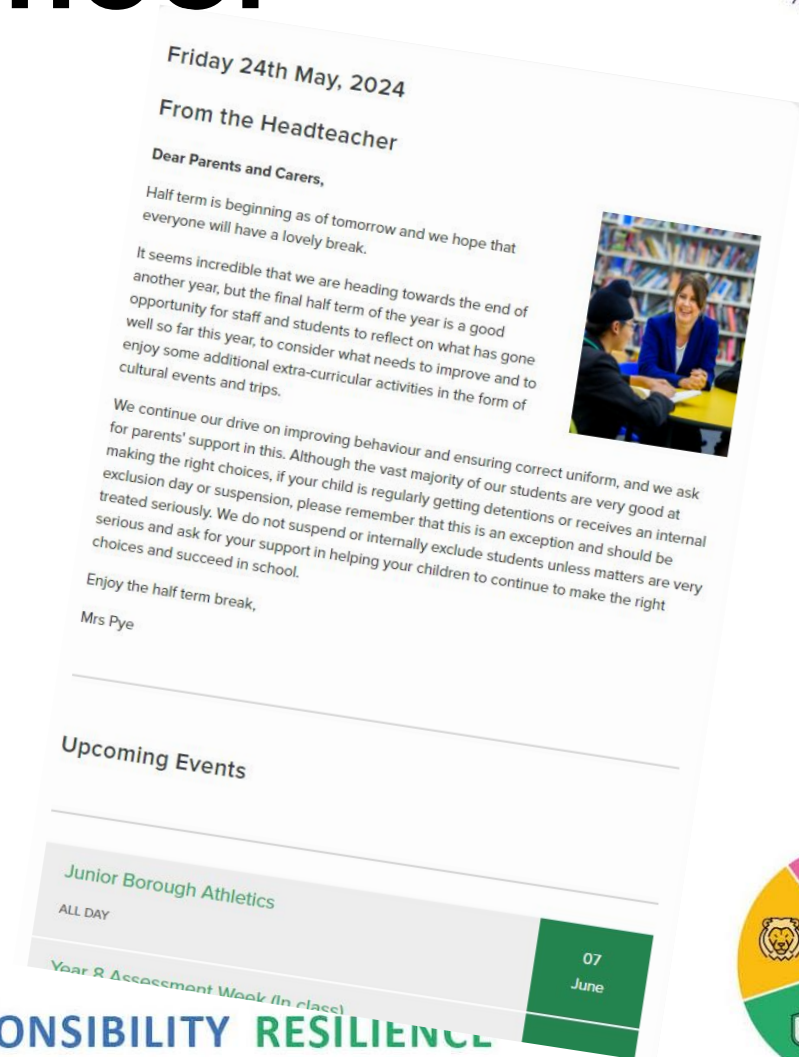
They also support all our coffee mornings- our newsletters will inform you of when these take place.

What we do.

Parent Connect



- Parent Connect is sent to all families once a fortnight.
- It includes key dates about bits and pieces that are about to come up over the term.
- It also has contact details for key teams in the school.
- It is also full of news about what has been going on both in and out of school.
- There will also be other newsletters that are sent out at different times.



COMMUNITY COMPASSION COURAGE RESPONSIBILITY RESILIENCE



Quick Links to GHS Padlet- What's this?



An area on our website developed for all families that are new to the school, but we have now added a section for anyone to explore.

[QUICK LINKS \(CLICK HERE\)](#)

Use the “Click to visit Padlet” button below to find instructions for Satchel One (Showmyhomework), Key Information, Independent Learning, Newsletters, Parenting workshops, and popular policies.

This **does not** replace our website and is a tool to support you at the very beginning of your GHS journey. Once you are familiar with the school, please do use the website for other areas/ policies.

COMMUNITY COMPASSION COURAGE RESPONSIBILITY RESILIENCE



Quick Links

Browse and share resources across different support categories. Add your resources to the relevant section.

In and Out of School activities

Ealing Holiday activities and Food



Next date Tuesday 9th June



Copy of March Coffee and Chat

Leading Parent Partnership Award



Instructions

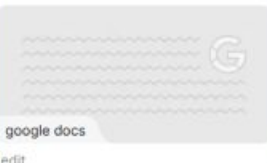
Free online translator



onlinedoctranslator.com

Free Online Translator - Preserves your document's layout (PDF, Word, Excel, PowerPoint, OpenOffice, text)

unifrog step-by-step



google docs

edit

PARENT log in

Step by Step



PPTX

Information

Meet the Year Teams



PDF

Year Teams 2025

Parent Online Safety



PDF

Parent Online Safety

Uniform

Item	Requirements
Headwear	Headwear is not permitted at school.
Shirts	Shirts must be plain, light-colored, short-sleeved, and tucked in.
Blouses	Blouses must be plain, light-colored, and tucked in.
Skirts	Skirts must be plain, light-colored, and of appropriate length.
Trousers	Trousers must be plain, light-colored, and of appropriate length.
Shoes	Shoes must be plain, light-colored, and suitable for school.
Accessories	Accessories must be plain and light-colored.

Independent Learning

KS3



thenational.academy

Free KS3 Teaching Resources for Lesson Planning | Oak National Academy

KS4



thenational.academy

Free KS4 Teaching Resources for Lesson Planning | Oak National Academy

Greenford High School KS3 Student Zone



PDF

18. KS3 Student Zone

Classes for Parents

Read Easy



readeasy.org.uk

Read Easy UK

FREE Digital Drop-in Sessions Jan-Nov



Being able to use a computer or digital device to get online can help you in many ways, from helping you to connect with friends and family, find work, they healthy, save money, learn more about the things that interest you and much more!

Whatever you want to do online, our Free Digital Drop-in sessions are a great place to help you get started - in a relaxed environment and at your own pace.

West Ealing Community Library	Days	Times
Malabar Avenue Ealing W13 9ET	Tuesdays	10.30am to 12.30pm
	Start Date:	10th January 2024
	End Date:	27th November 2024

Eligibility Criteria: aged 17 years or over and living in the West Ealing area.

For details or to book a place speak to a Library member or contact West Ealing Community Library on 020 3337 0057. Email: info@weal.org.uk



Parenting Workshops



SFSC Flyer

Circle



hfehmind.org.uk

Circle - Hammersmith, Fulham, Ealing and Hounslow Mind



ealingfamiliesdirectory.org.uk

Family Directory | Ealing Directory

External Organisations

Newsletter and Policies

Parent Connect new 13/03/26



greenford.ealing.sch.uk

Greenford High School Parent Connect - Friday 13th

Attendance Policy

Greenford High School Policy Document



COMMUNITY COMPASSION COURAGE RESPONSIBILITY RESILIENCE



What we need from you!

READING for success at GHS



The better a child's language knowledge and the richer their vocabulary, the more likely they are to understand the texts they read. Therefore, reading a range of texts will give them a reservoir of language to help them succeed.

At GHS, there are a number of ways we support reading.

- Every child's reading age is tested and tracked.
- Students must have a book as part of their equipment.
- Students have reading lessons timetabled as part of the curriculum.
- In English, students read for 5 minutes at the start of every lesson.
- Once a week during form time, students read.
- **Every night, your child should read 15 – 20 minutes. Also, this is an opportunity for you to discuss what your child is reading.**
- **Over the summer, your child should read at least two books.**

IN SCHOOL

AT HOME

COMMUNITY COMPASSION COURAGE RESPONSIBILITY RESILIENCE



Some last bits and pieces...



- Don't forget to fill in your online admissions forms.
- Don't forget that we need 2 contacts for your child.
- If you would like to discuss any medical issues to do with your child, the Welfare Team will be at the **Welcome Evening**, from 4:15 - 5:15.
- You will need to apply for Free School Meals, if you are eligible.
- And, remember to let us know if there are any changes to your plans for your child in September.



COMMUNITY COMPASSION COURAGE RESPONSIBILITY RESILIENCE



Important dates and information



Welcome Evening – Wednesday 24th June 2026

4:30 or 5.30pm

Address from the Headteacher and Year Team

Common Induction Day – Friday 26th June 2026

Students arrive at 8.30am via Ruislip Road Entrance

Students dismissed at 2.40pm via Ruislip Road Entrance

Lunch will be provided (selection of sandwiches)

Please refer to the additional handout

Remember to fill in all the paperwork online and don't forget to sign up to learning a musical instrument.

COMMUNITY COMPASSION COURAGE RESPONSIBILITY RESILIENCE

